



# HORIZONTAL BOILER FEED TANKS & SYSTEMS

Large, Small or In-between...  
Standard or Custom Models...



Shown is a 150 Gallon 30 X 48 All Stainless Steel syphon triplex with optional control panel and insulation with aluminum shield.

## EXCEPTIONAL VALUE, EXTRAORDINARY QUALITY

Aero horizontal boiler feed tanks & systems are available in stainless steel or carbon steel, simplex, duplex, and triplex configurations with siphon or non-siphon make-up inlets, 15 to 350 boiler horsepower. All of Fabtek Aero's horizontal tanks and systems have the following features:

**Superior NPSH** - Elevated tanks on tall rugged stands help to give pumps long, dependable life under demanding conditions.

**Ergonomic Design** - All piping is easily accessible from the sides of the tank. Sight gauge and thermometer are standard and are mounted on the front of the tank for high visibility.

**Piping** - All pump suction piping includes a strainer and isolation valve, as well as a union for ease of pump service.

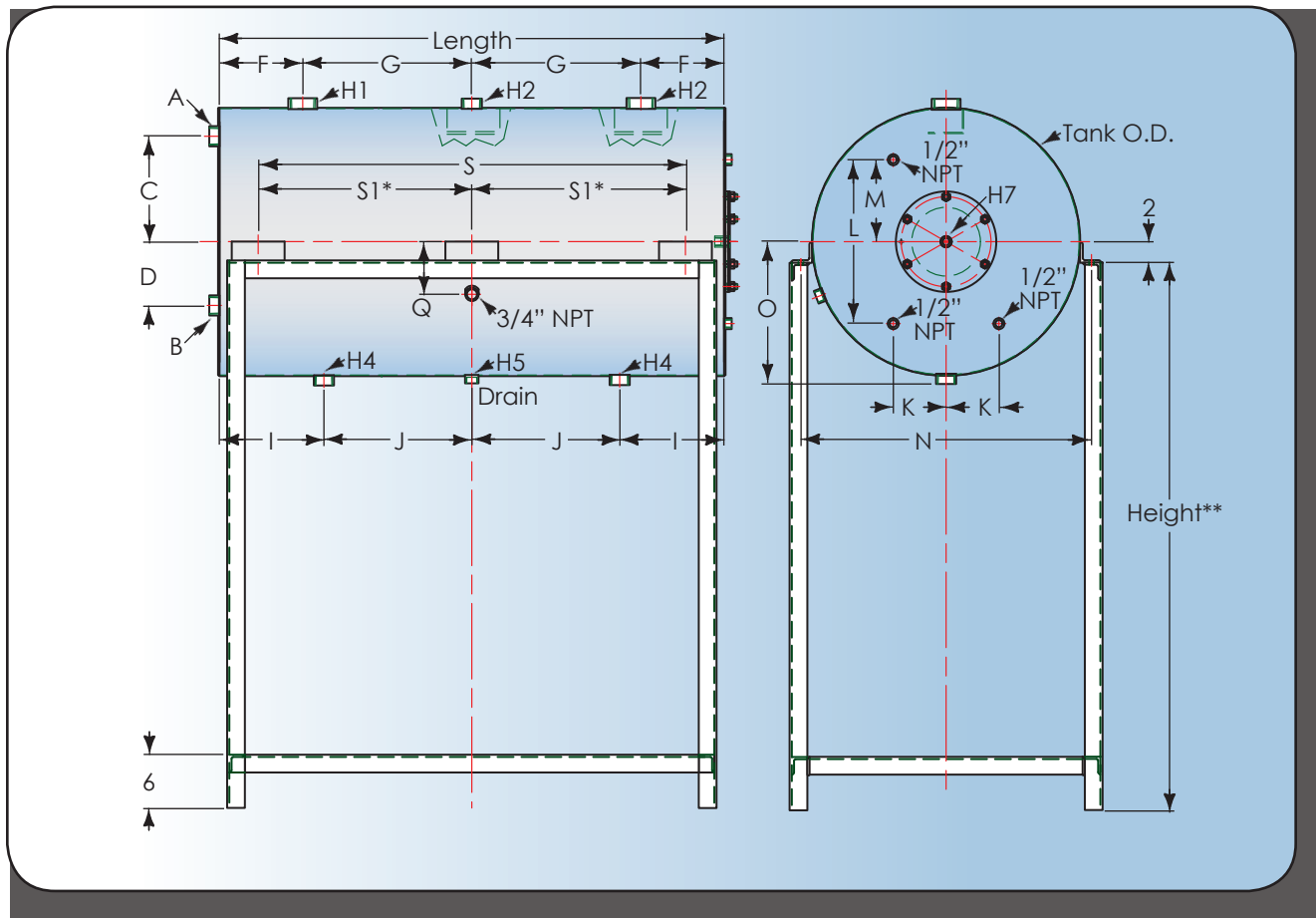
**Optional Control Panel** - Available for duplex and triplex units, automatically alternates pumps every cycle for even pump wear, or shut down one pump for service.

**Stainless Steel Systems** - Tanks are made of 12 gauge up to 100 Gallons, then 10 gauge for 150 Gallons and above. Stand is painted carbon steel.

**Carbon Steel Systems** - Tanks are made of 11 gauge up to 100 gallons, then 3/16" for 150 Gallons and above. Strainer is cast iron with a stainless steel screen. Make-up valve and sight glass are bronze.



## HORIZONTAL TANK & STAND DIMENSIONS



Tank Size	Tank OD	Width	Height**	Length	A	B	C	D	F	G	H1	H2	H4	H5	H7
60	23	27 5/8	52 1/8	36	1 1/4	1 1/4	10 1/8	6	6	12	2	1 1/2	1 1/2	3/4	1/2
80	23	27 5/8	52 1/8	46	1 1/4	1 1/4	10 1/8	6	7	16	2	1 1/2	2 1/2	3/4	1/2
100	25 3/4	29 7/8	59	48	1 1/4	1 1/4	10 3/4	7	8	16	2	1 1/2	2 1/2	3/4	3/4
150	30 3/4	35 1/4	61 5/8	48	2	2	13 3/8	8	8	16	2	1 1/2	2 1/2	1	3/4
200	32	38 5/8	69	60	2	2	13	8	12	18	2 1/2	1 1/2	2 1/2	1	3/4
250	32 1/2	39 1/8	69 1/4	72	2	2	13	8	18	18	2 1/2	1 1/2	2 1/2	1	3/4
300	36 1/4	42 7/8	71	72	2	2	15 1/2	9	18	18	2 1/2	2	2 1/2	1	3/4

Tank Size	I	J	K	L	M	N	O	Q	S	S1*
60	9	9	4	15 1/2	7 3/4	25 1/8	9 1/2	5	28 3/4	---
80	11	12	4	15 1/2	7 3/4	25 1/8	9 1/2	5	38 1/2	---
100	10	14	5	15 1/2	7 3/4	27 1/2	10 3/4	5	40 1/2	---
150	10	14	6	24	12	32 7/8	10 1/2	6	41	20 1/2
200	15	15	6	26	13	34 1/8	14	6	52	26
250	12	24	6	26	13	34 1/2	14 1/4	6	24	27
300	12	24	7	26	13	38 1/8	16	7	60	30

\*S1 - 60, 80, 100 GALLON TANKS ONLY HAVE TWO MOUNTING BRACKETS. ALL OTHERS HAVE THREE.  
\*\*CUSTOMIZABLE FOR SHORTER OR TALLER HEIGHT

